

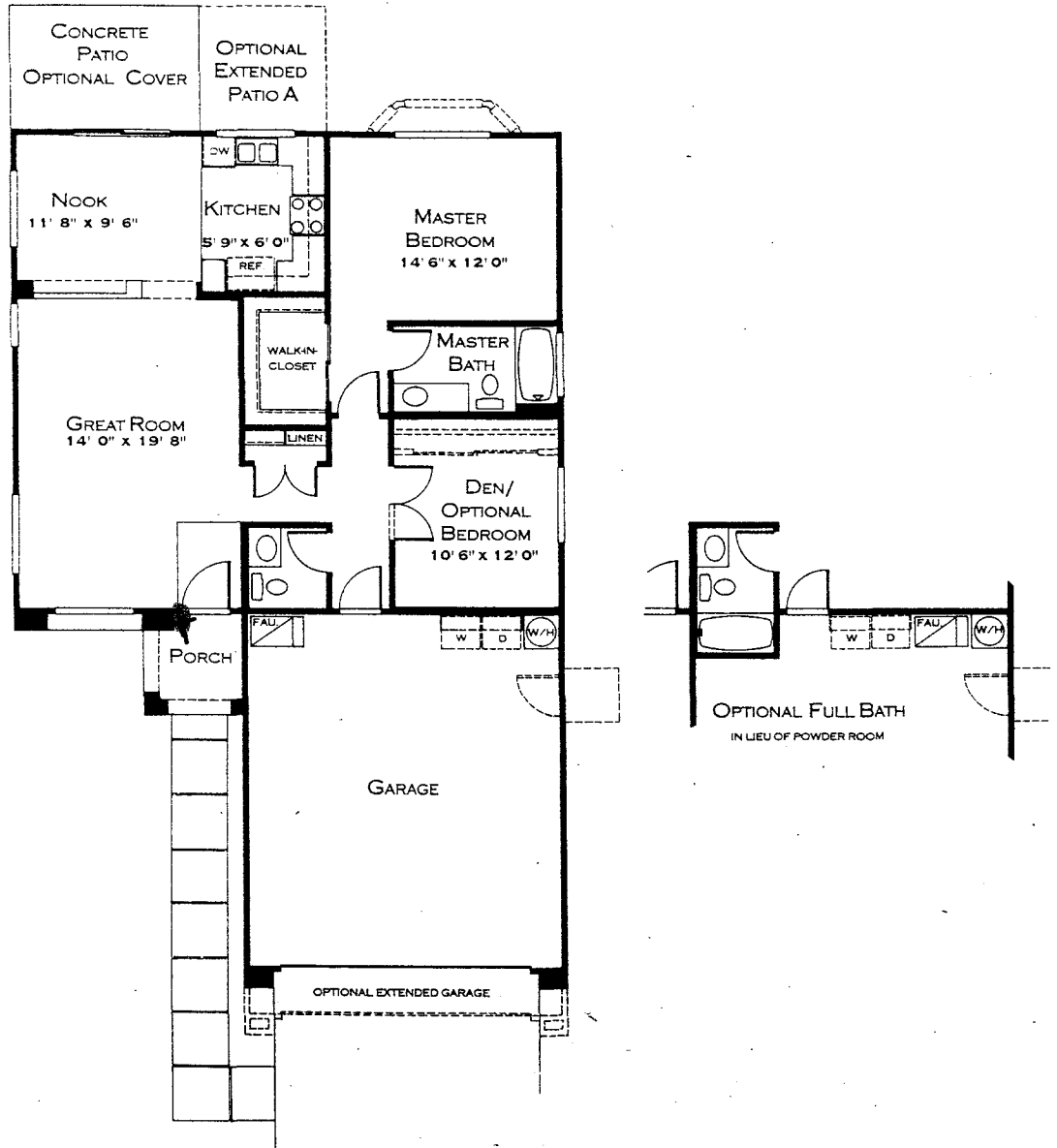
Floor plans

"Sunrise"

Plan 14302

Master bedroom,
den or optional
bedroom,
1 1/2 baths.
two-car garage.

Livable area:
Approx. 1,096
sq. ft.



Del Webb Communities, 7759 Goldbrook Drive, Tucson AZ 85743. Occupancy restricted to at least one person 55 years of age or better, a limited number of residents may be younger, and no one in permanent residence under 19 years of age. Community Association fees required. The developer may change home design, materials, features, methods of construction, and prices without prior notice. Due to normal construction tolerances, square footage may vary from those shown on floor plans. Floor plan and exterior design illustrations are artist's conceptions and are not intended to show specific detailing. Details available upon request. © 1999, Del Webb Corporation.

