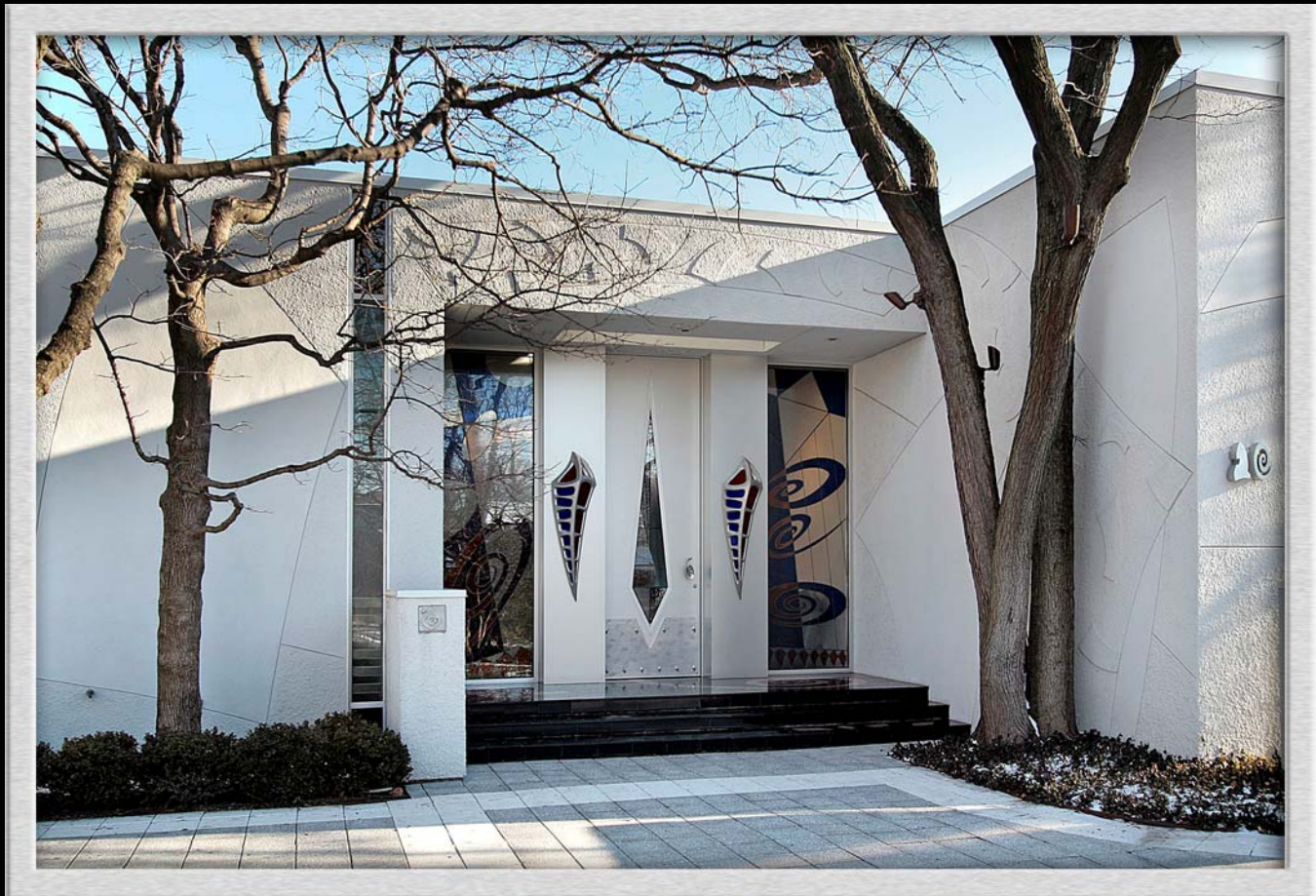


*10 Maple Hill Road
Glencoe, Illinois*



Presented by

**JULIE DEUTSCH
COLDWELL BANKER
847.217.1277 MOBILE
847.835.0236 OFFICE**

GLENCOE OFFICE

640 VERNON AVENUE

Overview



Spectacular one story contemporary lakefront home is situated in tucked away location with private beach and panoramic views of Lake Michigan.

Elegant details include twelve foot ceilings, entire eastern wall of home consists of floor to ceiling windows overlooking the lake, and full height doors and windows throughout.

Sophisticated architecture and impeccable use of materials emphasize it's exquisite environment for family living and gracious entertaining.



Interior Features

- ◆ Approximately 9,500 square feet of living space
- ◆ 17 custom skylights
- ◆ Ash hardwood flooring throughout
- ◆ Each room boasts it's own custom design

Room Dimensions:

Family Room: 32 x 30

Living Room: 44 x 30

Dining Room: 18 x 16

Library: 26 x 17

Kitchen: 35 x 14

Master Bedroom: 21 x 16

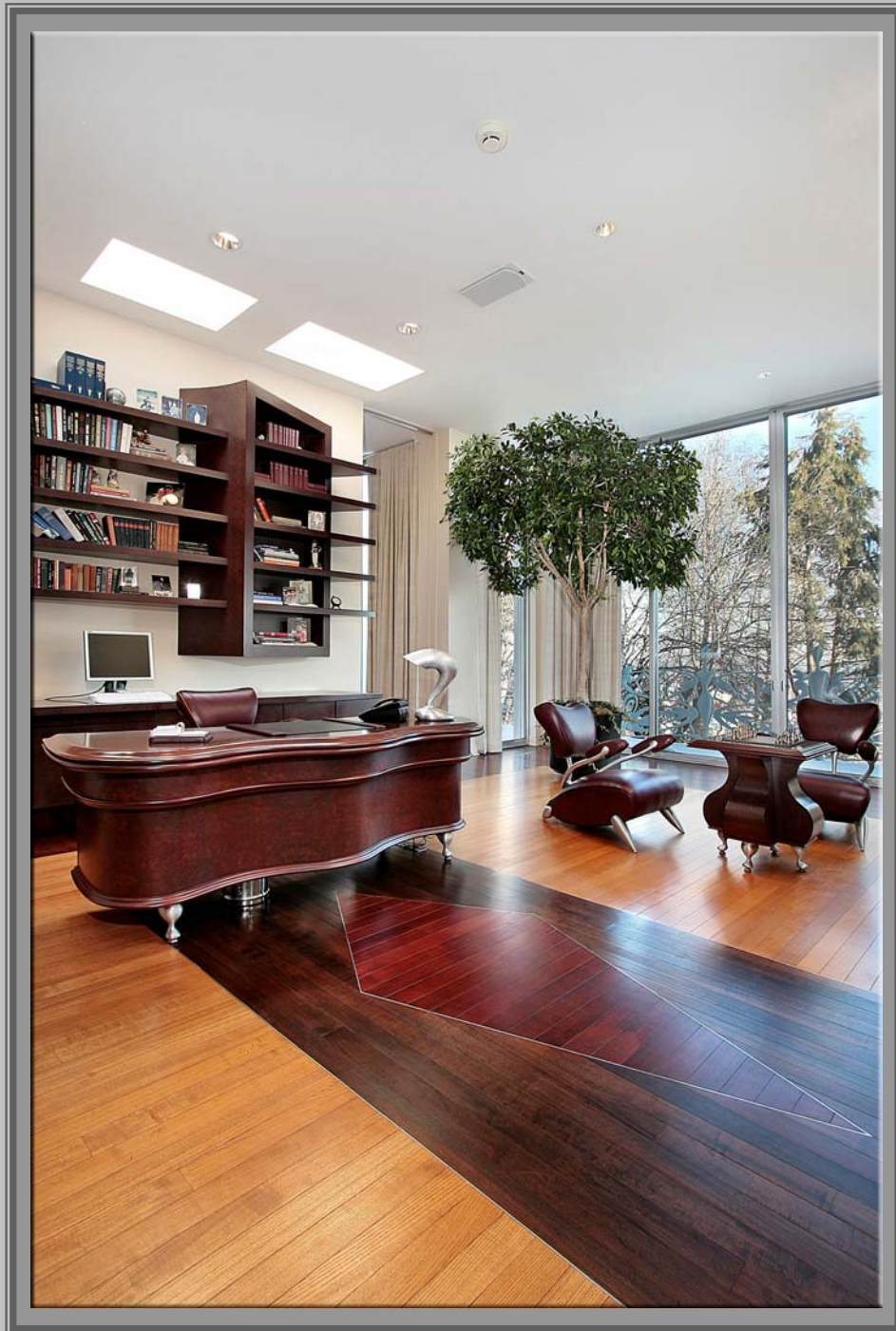
Bedroom 2: 19 x 16

Bedroom 3: 22 x 21

Bedroom 4: 15 x 11

Bedroom 5: 15 x 11

Lower Level Family Room: 31 x 21



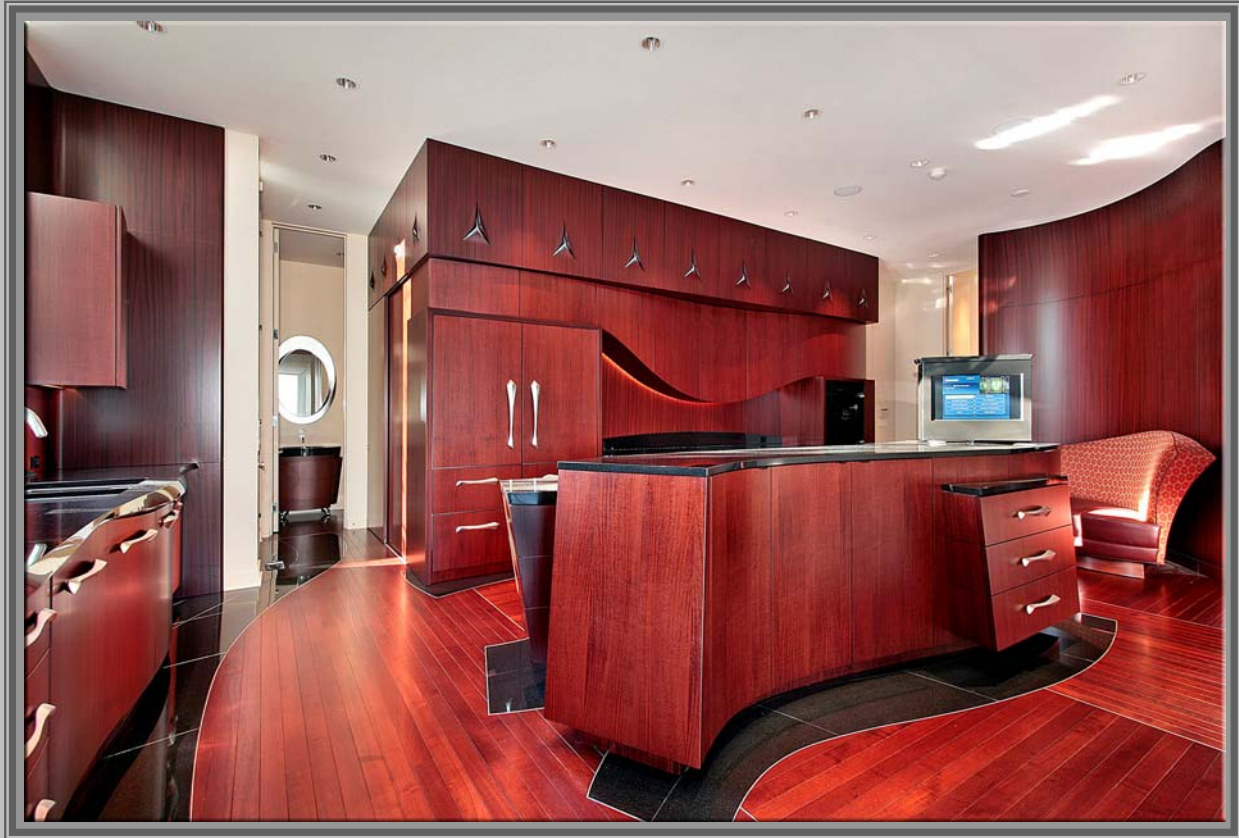
Living Room



Dining Room



Kitchen



Kitchen

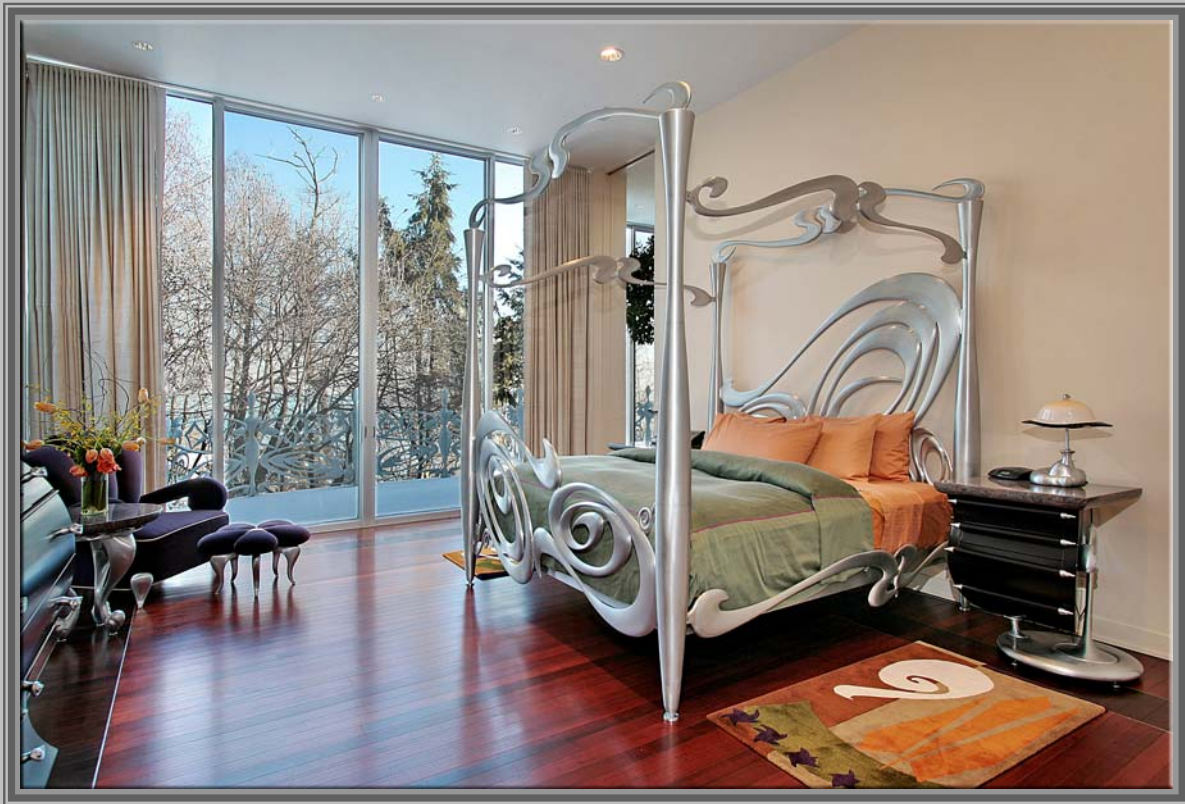
- ◆ Custom cabinetry made of two types of Mahogany: Khaya and Striped Ribbon Sapelli
- ◆ Custom inlay cast aluminum design on top level of cabinets & under cabinet lighting
- ◆ Speaker system
- ◆ AMX system
- ◆ Miele six burner cook top plus seventh burner for a wok
- ◆ Sub Zero refrigerator and freezer
- ◆ Two Miele dishwashers
- ◆ Franke sink
- ◆ Sculpted granite counter tops
- ◆ Hidden microwave with electric door
- ◆ Walk-in pantry with lots of storage and granite counters
- ◆ Family powder room off kitchen with hand carved mirror with silver leaf overlay & custom carved granite sink

Family Room



- ◆ Gas started, wood burning, Mahogany fireplace with carved granite custom mantle and surround
- ◆ TV that electronically lowers from the Mahogany surround above the fireplace
- ◆ Electronic shades on all windows
- ◆ Opens to terrace
- ◆ Surround sound

Master Suite

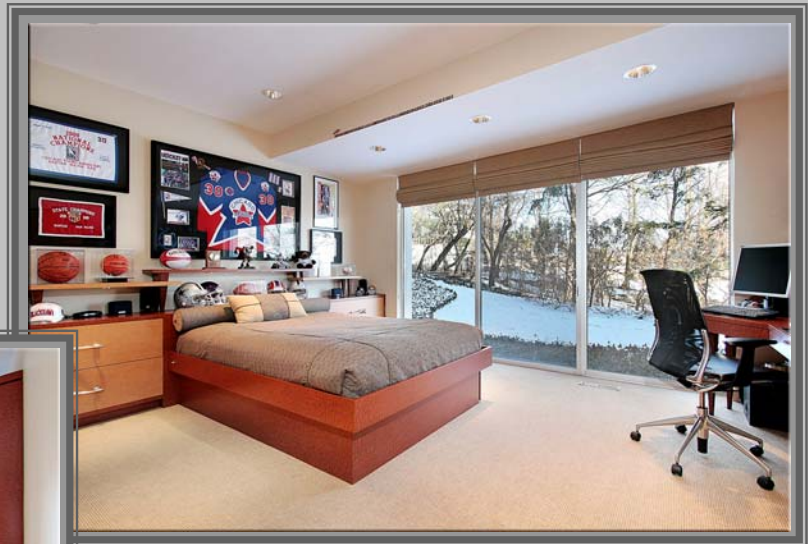


- ◆ Opens to terrace
- ◆ His dressing room has bird's eye Maple custom cabinetry and six compartmentalized closets with laminate interiors
- ◆ Cabinet drawers have removable dividers and drawers for jewelry have velvet interior and locking system in the custom cast aluminum handles
- ◆ His bath has commercial grade steam shower with seat, marble walls and flooring with a marble and granite inlaid mosaic.
- ◆ Custom cabinetry with built-in hamper and double medicine cabinet
- ◆ Dorenbracht fixture and Hastings sink

Her Sitting Room with Private Patio

- ◆ Her dressing room has bird's eye Maple custom cabinetry with compartmentalized closets with laminate interiors and custom cast aluminum handles
- ◆ Cabinet drawers have removable dividers and jewelry drawers have black velvet interior plus locking system in the custom handles
- ◆ Her bath has rose marble walls & floor with an inlaid mosaic
- ◆ Bird's eye Maple cabinetry & hand carved silver leaf mirror
- ◆ Custom etched glass doors & cast aluminum handles
- ◆ Dorenbracht fixtures & Hastings sink
- ◆ Jacuzzi tub & oversized shower

Family Bedrooms



Second Bedroom

- ◆ Doors to outdoors
- ◆ Built-in custom cabinetry with desk, shelving and bed with a trundle bed
- ◆ Walk-in compartmentalized closet
- ◆ Private bath with Italian ceramic tile flooring, including a marble and granite mosaic, custom cabinetry, Dorenbracht fixtures, tub and linen closet

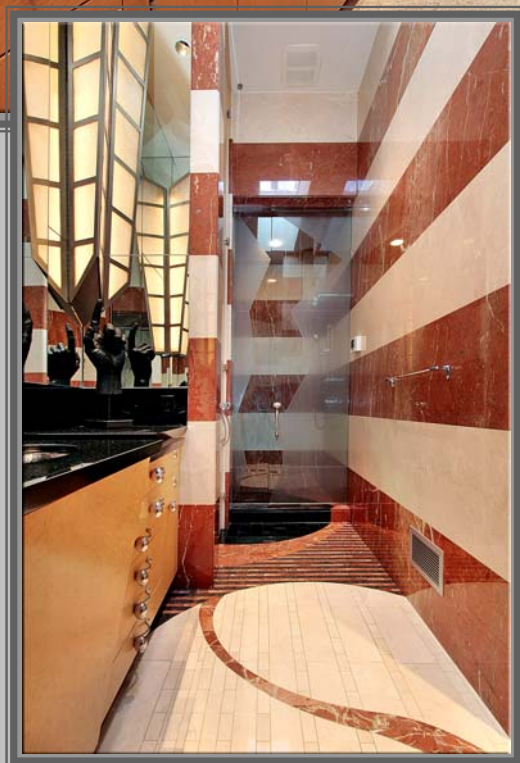
Third Bedroom

- ◆ Built-in custom cabinetry with desk, shelving and bed with a trundle bed
- ◆ Large walk-in compartmentalized cabinet
- ◆ Private bath with Italian ceramic tile flooring, including a marble and granite mosaic, custom cabinetry, Dorenbracht fixtures, tub and linen closet

Fourth and Fifth Bedrooms

- ◆ Share a hall bath and have beautiful lake views

*I*nterior *I*mages



Mechanicals

- ◆ **Keyth security system**
- ◆ **Fire alarm system**
- ◆ **Lucent phone system**
- ◆ **Two sump pumps with battery back-up and alarm**
- ◆ **Six air conditioning units**
- ◆ **Five furnaces, including one double furnace solely dedicated to the living room, all with Aprilaire**
- ◆ **Lighting on main level is commercial grade**
- ◆ **400 amp service**
- ◆ **Plumbing is commercial grade and pipes are copper**
- ◆ **Two gas barbecues**

Exterior Details

- ◆ **Chicago Stucco did all exterior stucco work and home has two layers of stucco for increased quality with designed textures.**
- ◆ **Raincoate Roofing applied a Bitumen roof by Derbe Gum and roof is maintained every six months.**
- ◆ **Scott Byron did all the landscaping for the entire property down to the lakefront and began work in 1992. He continues to maintain the property.**
- ◆ **Driveway was constructed by Masonry by Fernando and consists of custom Hanover extra thick pavers created in an elongated crescent shape.**
- ◆ **The entry has black granite steps with an inlaid mosaic and an electric heating system inside the steps to prevent snow from accumulating.**
- ◆ **Back terrace is made of slab material granite. The surface is sandblasted with the same custom shape as the stucco.**
- ◆ **The custom hand railing is cast aluminum and spans the entire eastern wall of the house and staircase.**
- ◆ **Garage is three car with a Cookson rolling aluminum door of commercial grade.**
- ◆ **Custom exterior lighting and handles are all custom cast aluminum**
- ◆ **Custom lighting from the stairs, pathway and to the beach**

